

INCLUDED FEATURES & SELECTIONS ADDENDUM

3865 DELINGER DRIVE
DELINGER'S POINT @ CAROLINA PARK
THE MULBERRY



1. Appliances - **ORDER PROCESSED**



36-Inch 6 Burner Gas Rangetop, Commercial-Style

Model #KCGC506JSS



Broan® 30-Inch Built In Power Pack Insert w/ Easy Install System, 650 Max Blower CFM, Stainless Steel with Aluminum Hybrid Baffle Grease Filter

Model BBN3306SS & HPFBN30



39 dBA Dishwasher in PrintShield™ Finish with Third Level Utensil Rack

Model # KDTE204KPS

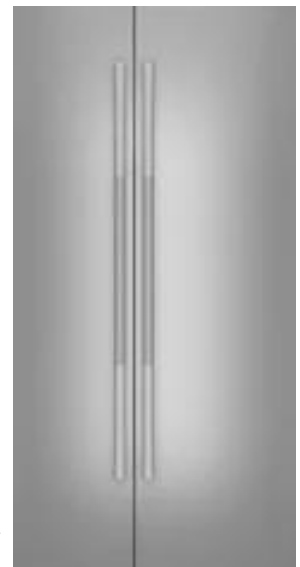


KitchenAid® 30" Combination Wall Oven with Even-Heat™ True Convection (Lower Oven)

Model # KOCE500ESS

Note: Model numbers and specifications are subject to change based upon availability from the manufacturer.

JBSFS42NMX
Panel-Ready 42" Built-In Side-By-Side Refrigerator



INCLUDED FEATURES & SELECTIONS ADDENDUM

3865 DELINGER DRIVE
DELINGER'S POINT @ CAROLINA PARK
THE MULBERRY



2. Cabinets - **ORDER PROCESSED** | *Layouts available upon request*

Kitchen & Island

Door & Drawer Style:

TP13 Panel with
TCS-2 Sticking & T5 Square Outer
Edge with matching drawers



Hardware:

Spice Pullouts & Trash -
Signature Hardware Orvin 481261 (3)



All Doors & Long Drawers -
Signature Hardware Rodino 444213 (42)



Hood: Angle Shaker Hood



Trim: 5-1/4" cove crown
& shaker light rail



Box 22 & 25 Drawers - Signature
Hardware Orvin 481257 (4)



Finishes: Farrow & Ball Skimming
Stone #241 throughout



** designer to approve sample*

** crown on cabinets provided and finished by GSC; no crown on hood*

Family Room

Drawer Style:

Slab with T-20 outer edge



Finish: SW7005 Pure White

Hardware: Bellwith Keeler
B076883-BGB (6)




INCLUDED FEATURES & SELECTIONS ADDENDUM

3865 DELINGER DRIVE
DELINGER'S POINT @ CAROLINA PARK
THE MULBERRY




Bath 2


Drawer Style: inset slab



Hardware:Schaub & Company Model:982-DAB(4)



Finish: Pickle



Laundry Room

Door Style:
TP13 Panel with TCS-2 Sticking & T5 Square Outer Edge



Hardware:
Signature Hardware Model: 444219 (4)



Finish: OC-15 Baby Fawn



Butler's Pantry

Door & Drawer Style:
TP13 Panel with TCS-2 Sticking & T5 Square Outer Edge with matching drawers



Finishes: - Peppercorn SW7674



Hardware (Window Wall)
Doors - Signature Hardware 444213 (6)
Drawers - Signature Hardware 481261 (4)



Hardware (Hutches)
Doors - Signature Hardware 483696 (4)
Drawers - Signature Hardware 443799 (4)



INCLUDED FEATURES & SELECTIONS ADDENDUM

3865 DELINGER DRIVE
DELINGER'S POINT @ CAROLINA PARK
THE MULBERRY



Bath 3

Door & Drawer Style:
TP13 Panel with
TCS-13 Sticking & T5 Square Outer
Edge with matching drawers



Finish: Peppercorn SW7674




Hardware: TK3000PN (7)



Master Bath


Doors - inset; TP13 Panel with
TMD8 frame profile




Finish: Sherwin Williams
Pure White SW7005



Hardware:
Doors - Signature Hardware 481904 (4)



Drawers - Signature Hardware 481888 (16)



INCLUDED FEATURES & SELECTIONS ADDENDUM

3865 DELINGER DRIVE
 DELINGER'S POINT @ CAROLINA PARK
 THE MULBERRY



3. Plumbing Selections - **ORDER PROCESSED**



KITCHEN



Gwen 33" Single Bowl Farmer Sink - White
 Qty: 1



Disposer Flange With Extended Throat - Polished Nickel
 Qty: 1



Litze Pull Down Faucet With Arc Spout And Knurled Handle - Polished Nickel
 Qty: 1



Garbage Disposer Switch With 3 Foot Cord - Polished Nickel
 Qty: 1



Garbage Disposal, 1/2 Hp, 26 Oz. Grinding Chamber Capacity, 120 Voltage, 1-1/2" Connection Drain
 Qty: 1



POWDER



Entrada Close Coupled Elongated Toilet 1.28gpf - Cotton
 Qty: 1



Softclose Toilet Seat - Elongated - Cotton
 Qty: 1



Toilet Tank Lever, Side Mount - Satin Gold
 Qty: 1

*PRODUCT IMAGE NOT AVAILABLE IN ACTUAL FINISH



Astor Widespread Lavatory Faucet - Satin Gold
 Qty: 1



POWDER



Clemens Towel Ring - Satin Gold
 Qty: 1

*PRODUCT IMAGE NOT AVAILABLE IN ACTUAL FINISH



Clemens Double Post Toilet Tissue Holder - Satin Gold
 Qty: 1

*PRODUCT IMAGE NOT AVAILABLE IN ACTUAL FINISH



INCLUDED FEATURES & SELECTIONS ADDENDUM
3865 DELINGER DRIVE
DELINGER'S POINT @ CAROLINA PARK
THE MULBERRY

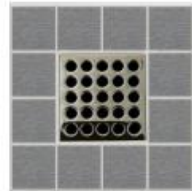


molufs

PRIMARY



CASTIA
Qty: 1



Pro Series Drain Cover - Polished Nickel
Qty: 1



Studio McGee Castia Rise-Temp Valve Trim - Vibrant Polished Nickel
Qty: 1



Studio McGee Castia Master Shower / Transfer Valve Trim With Lever Handle - Vibrant Polished Nickel
Qty: 1

molufs

PRIMARY



Hydroroll-H Bath / Shower Column - Vibrant Polished Nickel
Qty: 1



Purist Four Function Handshower, 2.5 Gpm - Vibrant Polished Nickel
Qty: 1



Master Shower 60" Metal Shower Hose - Vibrant Polished Nickel
Qty: 1



Statement 19" Wall Mount Single Function Rainhead Arm And Flange - Vibrant Polished Nickel
Qty: 1

molufs

PRIMARY



Contemporary Round 10" Single Function Rainhead, 2.5 Gpm - Vibrant Polished Nickel
Qty: 1



Studio McGee Castia Wall Mount Bath Faucet Trim - Vibrant Polished Nickel
Qty: 1

molufs

PRIMARY



Softclose Toilet Seat - Elongated - Cotton
Qty: 1



Toilet Tank Lever, Side Mount - Polished Nickel
Qty: 1



SOCORRO
Qty: 1



Entrada Close Coupled Elongated Toilet 1.28gpf - Cotton
Qty: 1



Studio McGee Castia 24" Towel Bar - Vibrant Polished Nickel
Qty: 1



Studio McGee Castia Pivoting Toilet Paper Holder - Vibrant Polished Nickel
Qty: 1

INCLUDED FEATURES & SELECTIONS ADDENDUM

3865 DELINGER DRIVE
 DELINGER'S POINT @ CAROLINA PARK
 THE MULBERRY



moluf's

PRIMARY



Studio Mgeee Caatla Towel Ring - Vibrant Polished Nickel
Qty: 1

moluf's

BATH 2



Saylor Two Handle Widespread Bathroom Faucet - Matte Black
Qty: 1



Pro Series Drain Cover - Matte Black
Qty: 1



Saylor Monitor 14 Series Shower Trim - Matte Black
Qty: 1



Entrada Close Coupled Elongated Toilet 1.28gpf - Cotton
Qty: 1

moluf's

BATH 2



Softclose Toilet Seat - Elongated - Cotton
Qty: 1



Toilet Tank Lever, Side Mount - Matte Black
Qty: 1
*PRODUCT IMAGE NOT AVAILABLE IN ACTUAL FINISH



Saylor Tissue Holder - Matte Black
Qty: 1



Saylor 8" Towel Bar - Matte Black
Qty: 1



Saylor Double Robe Hook - Matte Black
Qty: 1

moluf's

BATH 2



Saylor Double Robe Hook - Matte Black
Qty: 1

INCLUDED FEATURES & SELECTIONS ADDENDUM
3865 DELINGER DRIVE
DELINGER'S POINT @ CAROLINA PARK
THE MULBERRY



moluf's

BATH 3



Hawkins Bath Right Hand Drain 5' - Canvas White
Qty: 1



Bancroft Rite-Temp Bath And Shower Trim Kit, 2.5 Gpm, Not Spout - Vibrant Polished Nickel
Qty: 1



Bancroft Monoblock Bathroom Sink Faucet, 1.2 Gpm - Vibrant Polished Nickel
Qty: 1



Entrada Close Coupled Elongated Toilet 1.28gpf - Cotton
Qty: 1

moluf's

BATH 3



Softclose Toilet Seat - Elongated - Cotton
Qty: 1



Toilet Tank Lever, Side Mount - Polished Nickel
Qty: 1



Bancroft Toilet Paper Holder - Vibrant Polished Nickel
Qty: 1



Bancroft Hand Towel Holder - Vibrant Polished Nickel
Qty: 1

moluf's

BATH 3



Bancroft 24" Towel Bar - Vibrant Polished Nickel
Qty: 1

moluf's

FROG



Hawkins Bath Right Hand Drain 5' - Canvas White
Qty: 1



Saylor Monitor 14 Series Tub And Shower Trim - Matte Black
Qty: 1



Entrada Close Coupled Elongated Toilet 1.28gpf - Cotton
Qty: 1



Softclose Toilet Seat - Elongated - Cotton
Qty: 1

INCLUDED FEATURES & SELECTIONS ADDENDUM
3865 DELINGER DRIVE
DELINGER'S POINT @ CAROLINA PARK
THE MULBERRY



moluf's

FROG

moluf's

FROG



Toilet Tank Lever, Side Mount - Matte Black
Qty: 1
PRODUCT IMAGE NOT AVAILABLE IN ACTUAL FINISH



Mistral 510 Pedestal Lavatory, One-hole - White
Qty: 1



Saylor Tissue Holder - Matte Black
Qty: 1



Saylor Double Robe Hook - Matte Black
Qty: 1



Saylor Single Handle Bathroom Faucet - Matte Black
Qty: 1



**Saylor 8\"/>
Qty: 1**

RINNAI:



Ext Res Ctwh 199K Btu 11Gpm Pump Valve
Qty: 1



Timer Controller For Recirculation
Qty: 1

Shower Glass & Hardware

- Master - polished nickel | Handle style - ladder



- Guest/Bath 2 - matte black | Handle style - ladder

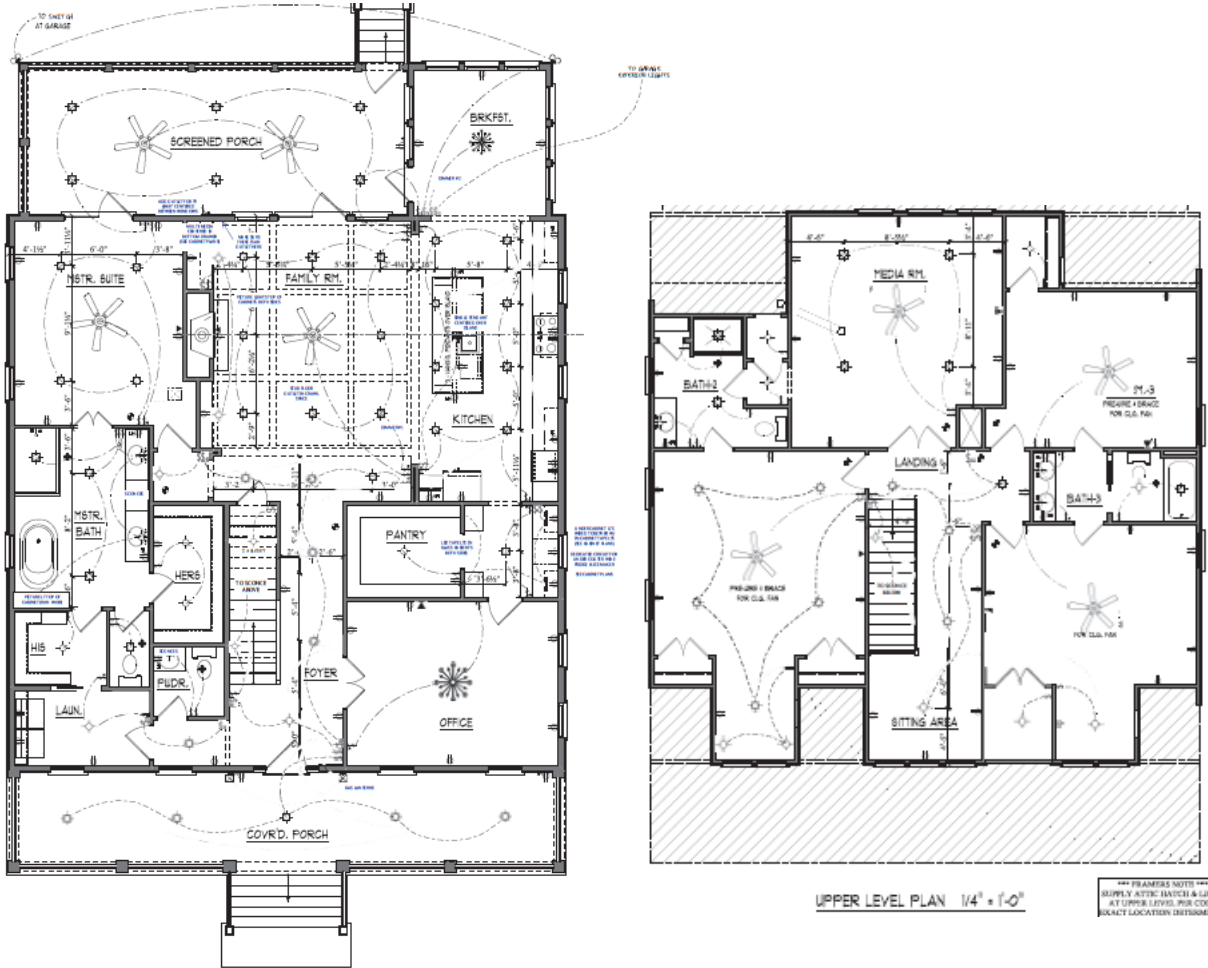


INCLUDED FEATURES & SELECTIONS ADDENDUM

3865 DELINGER DRIVE
 DELINGER'S POINT @ CAROLINA PARK
 THE MULBERRY



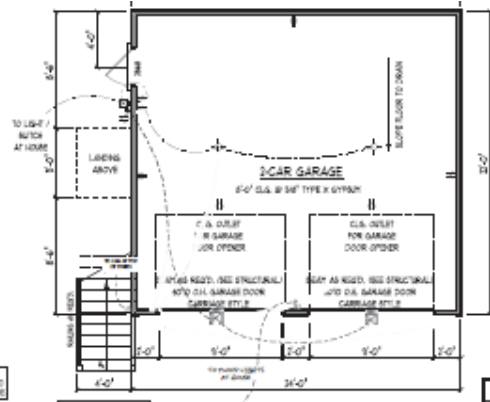
4. Electrical & Low Voltage Selections - **ORDER PROCESSED**



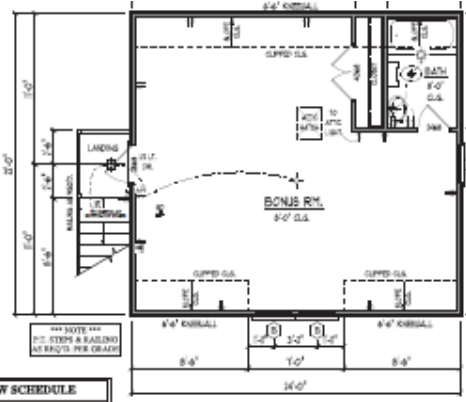
UPPER LEVEL PLAN 1/4" = 1'-0"

*** FRAMESHOTS ***
 SUPPLY AT THE HATCHES & LIE
 AT UPPER LEVEL. FOR COO
 BEATY LOCATION DEFINES

MAIN LEVEL PLAN 1/4" = 1'-0"



MAIN LEVEL PLAN 1/4" = 1'-0"



BONUS RM. PLAN 1/4" = 1'-0"

WINDOW SCHEDULE	
SYMBOL	OPENING
A	2'-10" x 5'-6" BLACKSSS

GARAGE PLAN

INCLUDED FEATURES & SELECTIONS ADDENDUM

3865 DELINGER DRIVE
DELINGER'S POINT @ CAROLINA PARK
THE MULBERRY



5. Windows & Doors - **ORDER PROCESSED**

• WINDOWS

- single hung (unless otherwise noted on the plans)
- black exterior and interior painted to match the trim
- two over two grid pattern with grids between the glass
- DP 50-rated | Low E
- fabric shield impact protection included
- add black flashing



• EXTERIOR DOORS:

- **FRONT DOOR:** 3-0x8-0 Alexandria single door w/ 12" sidelights (left hand in-swing)
- **FRONT DOOR HARDWARE:** Addison in matte black



- **SCREEN PORCH PATIO DOORS:** Full light fiberglass French doors flanked by fixed door panels



INCLUDED FEATURES & SELECTIONS ADDENDUM

3865 DELINGER DRIVE
DELINGER'S POINT @ CAROLINA PARK
THE MULBERRY



- **BREAKFAST ROOM TO SCREEN PORCH:** Full light fiberglass door



- **MASTER BEDROOM TO SCREEN PORCH:** Full light French doors



- **SCREEN DOOR:** Anderson screen door | **Color – White**
- **SCREEN DOOR HARDWARE -** Modern in matte black



- **Detached Garage:** Solid 2 panel side access door



INCLUDED FEATURES & SELECTIONS ADDENDUM

3865 DELINGER DRIVE
DELINGER'S POINT @ CAROLINA PARK
THE MULBERRY



- **FROG:** 1/2 light door



- **INTERIOR DOORS:** 2-PANEL*
- **INTERIOR DOOR HARDWARE:** Solstice in matte black



**All interior doors are 2-panel with the exception of the following:*

- Office Doors - four light full view French doors (per plans)
- Butlers Pantry Door (from Office) - four light full view (upgrade)
- Media Doors - four light full view French doors (per plans)



INCLUDED FEATURES & SELECTIONS ADDENDUM

3865 DELINGER DRIVE
DELINGER'S POINT @ CAROLINA PARK
THE MULBERRY



6. Fireplace - **ORDER PROCESSED**

INTERIOR FIREPLACE

- **Firebox:** Novus 42"



- **Mantel:** Kenwood

KENWOOD Signature Series



FRONT



SIDE



- **Surround:** Black Soapstone



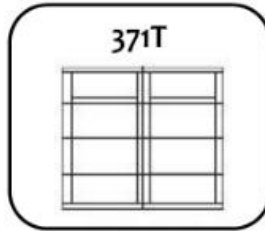
- ❖ **NOTE:** there will NOT be a floor hearth (hardwood to run all the way to the wall)

INCLUDED FEATURES & SELECTIONS ADDENDUM

3865 DELINGER DRIVE
 DELINGER'S POINT @ CAROLINA PARK
 THE MULBERRY



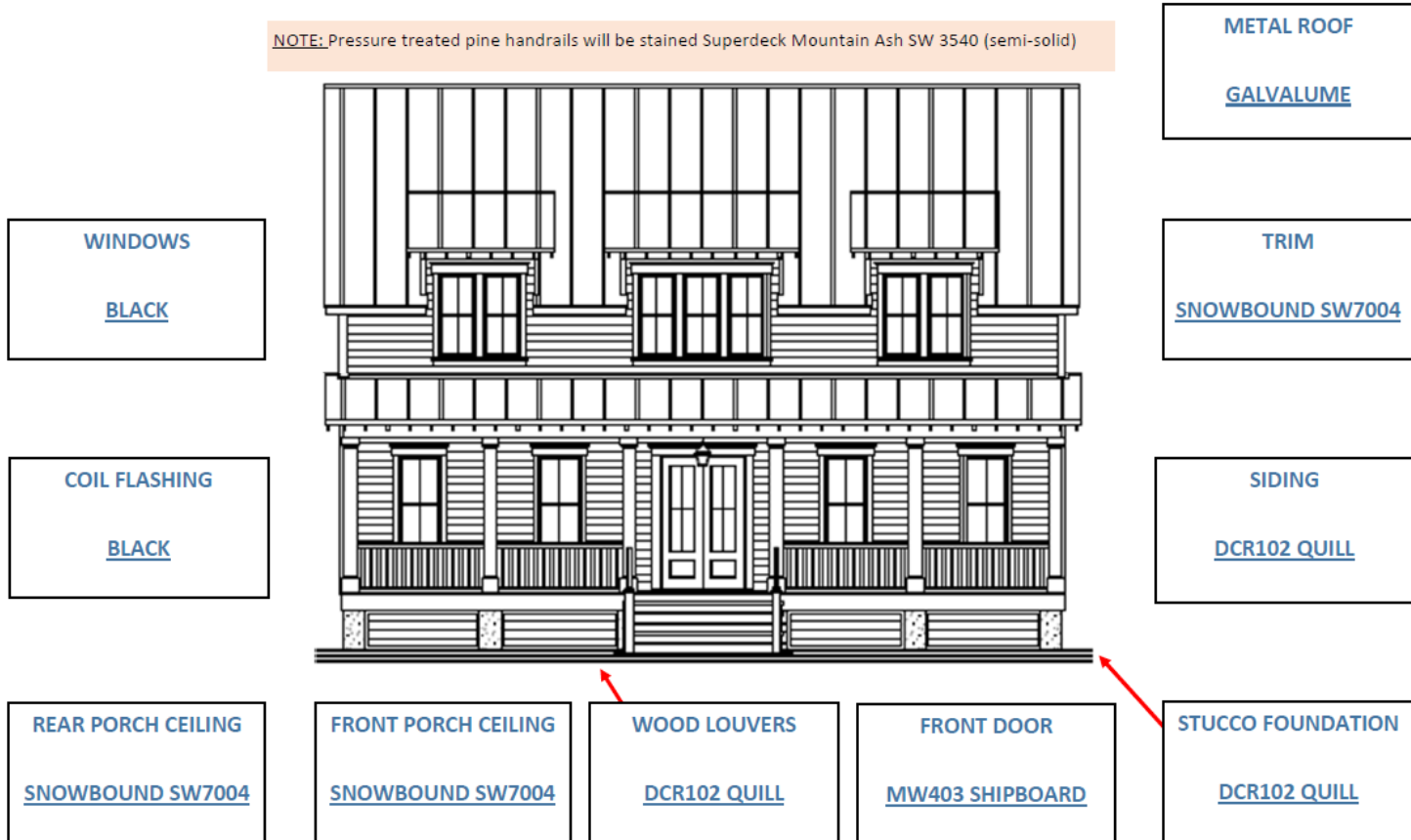
7. Garage Doors - **ORDER PROCESSED**



BEAN HINGE AND HANDLE

8. Exterior Colors - **ORDER PROCESSED**

NOTE: Pressure treated pine handrails will be stained Superdeck Mountain Ash SW 3540 (semi-solid)



NOTE: Cline Homes uses only Sherwin Williams brand paint & related products. Should CLIENT select a non-Sherwin Williams color, Cline Homes will have the color **MATCHED** by Sherwin Williams. Fascia, soffit, handrail and caps, HVAC louvers and hot water heater are painted to match trim. This rendering is for illustrative purposes only. Certain details and/or architectural elements simply serve as a representation of the actual home.

INCLUDED FEATURES & SELECTIONS ADDENDUM

3865 DELINGER DRIVE
DELINGER'S POINT @ CAROLINA PARK
THE MULBERRY



9. Lighting Fixtures - **ORDER PROCESSED**

Exterior



gas lanterns
flanking front door



over garage doors



S21234

S21345



garage pedestrian door

Foyer & Stairwell sconces



S21273



S29835



INCLUDED FEATURES & SELECTIONS ADDENDUM

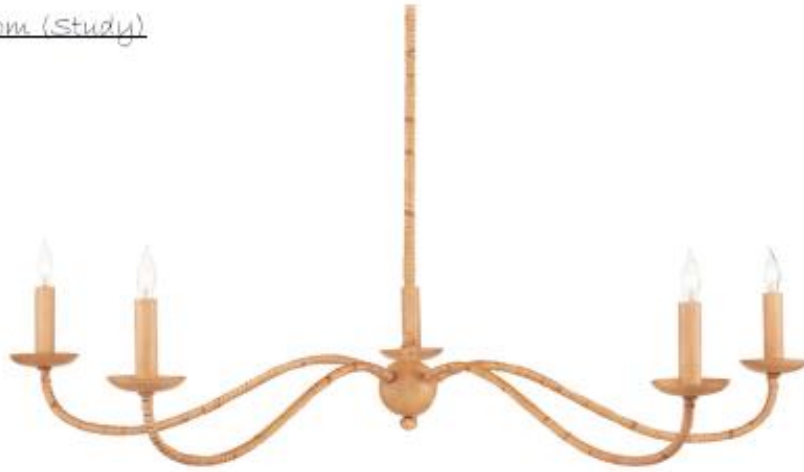
3865 DELINGER DRIVE
DELINGER'S POINT @ CAROLINA PARK
THE MULBERRY



Dining Room (Study)



S21273



Powder Room



sconces flanking the mirror

S21234



Laundry Room



S21273



Family Room & Screen Porch



bookcase picture lights

S21345



Spitfire matte white with whitewash blades and 18" downrod

INCLUDED FEATURES & SELECTIONS ADDENDUM

3865 DELINGER DRIVE
DELINGER'S POINT @ CAROLINA PARK
THE MULBERRY



hall to master

S21234



Screen porch - driftwood with driftwood blades and 18" downrod

Kitchen & Breakfast Room



breakfast room

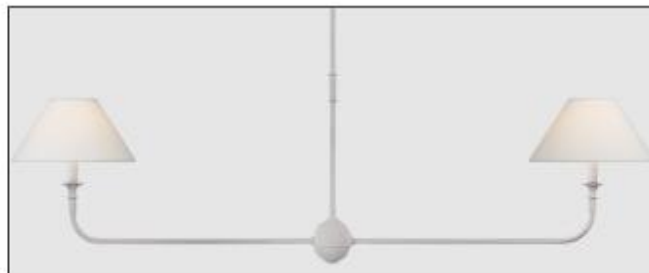
S21273



pantry



S11422



kitchen island

S21273



INCLUDED FEATURES & SELECTIONS ADDENDUM

3865 DELINGER DRIVE
DELINGER'S POINT @ CAROLINA PARK
THE MULBERRY



Master Suite



linen cabinet sconce



S21345



vanity sconces



S11234



spitfire matte white with
whitewash blades and 18" downrod



8" \times 12" AFX LED
disc light in
master closets

Second Floor Sitting Room



S29835

Bedroom #4 Reading Nook



S12422

INCLUDED FEATURES & SELECTIONS ADDENDUM

3865 DELINGER DRIVE
DELINGER'S POINT @ CAROLINA PARK
THE MULBERRY



Secondary Bedrooms



with 12" downrod
and light kit



8" AFX LED disc
light in closets

Bedroom #2 Reading Nook



S29835



sconces flanking
the mirror



S21273

Bath 3



sconces over
each sink

S21273



toilet room



S29835



INCLUDED FEATURES & SELECTIONS ADDENDUM

3865 DELINGER DRIVE
DELINGER'S POINT @ CAROLINA PARK
THE MULBERRY



Media Room



Twist ceiling fan in distressed koa with 12" downrod



6" AFX LED disc light in hall to bathroom & Media closet

FROG



Twist ceiling fan in distressed koa



FROG bath over the mirror

S21345



INCLUDED FEATURES & SELECTIONS ADDENDUM

3865 DELINGER DRIVE
DELINGER'S POINT @ CAROLINA PARK
THE MULBERRY



10. Countertops - **ORDER PROCESSED** | See countertop waivers on final pages

Kitchen Perimeter & Island

Selection: Sterling Quartz -3 cm



Kitchen Sink: Barclay Gwen FS33




Kitchen Faucet (single hole):
Brizo Litze BRI-63043LF-PN

Eased Edge with no splash





Butler's Pantry

Selection: Silver Gray Honed Granite -3 cm



Eased Edge with 18" splash along the back only



Bath 2

Selection: Shadow Storm Marble Honed 3cm



Faucet (8" widespread):
3535-BLMPU-DST SAYLOR



Sink: US1812



Eased Edge with 2" backsplash along back only



INCLUDED FEATURES & SELECTIONS ADDENDUM

3865 DELINGER DRIVE
DELINGER'S POINT @ CAROLINA PARK
THE MULBERRY



Master Bath

Selection: Everest White Quartz -3 cm



Sink: US1812



Eased Edge with 2" splash along back only



Faucet (8" widespread):
K-35908-4-SN CASTIA



Bath 3

Selection: Atlantic Lava Stone Honed 3cm



Sink: US1812



Eased Edge with 2" splash along back only



Faucet (single hole):
K-10579-4-SN BANCROFT



Powder

Selection: Calacatta Gold Borghini Marble Honed 2 cm



Sink: US1812



Mitered with 4" splash along back and 12" apron all three sides



Faucet (8" spread):
NEWPORT ASTOR 910/24S



INCLUDED FEATURES & SELECTIONS ADDENDUM

3865 DELINGER DRIVE
DELINGER'S POINT @ CAROLINA PARK
THE MULBERRY



11. Mirrors - **ORDER PROCESSED**

- Powder - 18x58 black framed mirror



- Master - thin, white oak framed mirrors; two 36x48 over the sinks and (1) 30x48 over the middle cabinet; stained "Simply White" (similar to below / frames & mirror through GSC)



- Bath 2 - 30x48 black framed metal mirror



INCLUDED FEATURES & SELECTIONS ADDENDUM

3865 DELINGER DRIVE
DELINGER'S POINT @ CAROLINA PARK
THE MULBERRY



- Bath 3 - 24x36 light oak stained mirror over each sink



- FROG - 24x42 beveled glass frameless mirror (standard)



INCLUDED FEATURES & SELECTIONS ADDENDUM

3865 DELINGER DRIVE
DELINGER'S POINT @ CAROLINA PARK
THE MULBERRY



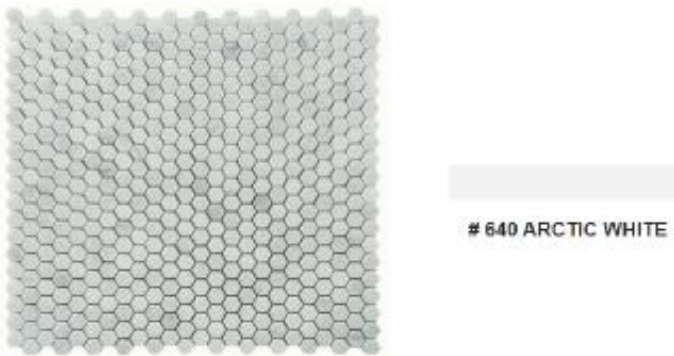
12. Tile - **ORDER PROCESSED**

PRIMARY BATH

FLOOR: Emser Sterlina II Dove 8x10 hex (points into room) | #543 driftwood prism grout



SHOWER FLOOR: Rickert Tile 6169A Oriental White Baby hex | #640 arctic white prism grout



SHOWER WALLS (to the ceiling): Stanza white 4x12 matte brick pattern | #640 arctic white prism grout | 12x20 niche installed vertically approximately 42" from finished floor (location TBD on site)



INCLUDED FEATURES & SELECTIONS ADDENDUM

3865 DELINGER DRIVE
DELINGER'S POINT @ CAROLINA PARK
THE MULBERRY

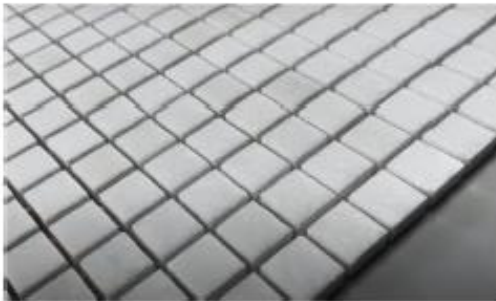


BATH 2

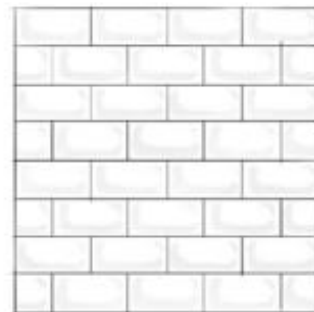
FLOOR: WW01 6x24 Diagonal Herringbone (point to vanity) | #642 ash prism grout



SHOWER FLOOR: Happy Floors PD170 Thassos 5/8x5/8 Straight Lay | #640 arctic white prism grout



SHOWER WALLS (to the ceiling): Costa Clara CC80 3x12 horizontal brick pattern | #640 arctic white prism grout | 12x20 niche installed vertically approximately 42" from finished floor (location TBD on site)



INCLUDED FEATURES & SELECTIONS ADDENDUM

3865 DELINGER DRIVE
DELINGER'S POINT @ CAROLINA PARK
THE MULBERRY



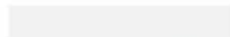
BATH 3 (w/ tub)

FLOOR: Gloss White 1" Hexagon (point to vanity) | #642 Ash Prism grout

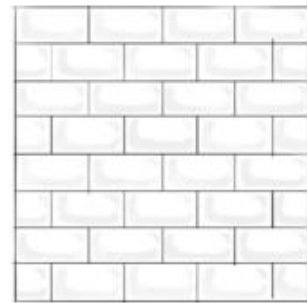


#642 Ash

TUB WALLS (to the ceiling): Costa Clara CC80 3x12 horizontal brick pattern | #640 arctic white prism grout | 12x12 niche with bottom @ 24" from top of tub



640 ARCTIC WHITE



LAUNDRY

FLOOR: MSI Brickstone White 2x10 Brick Pattern (looking into room)



INCLUDED FEATURES & SELECTIONS ADDENDUM

3865 DELINGER DRIVE
DELINGER'S POINT @ CAROLINA PARK
THE MULBERRY



FROG BATH

FLOOR: Rigid Core (no tile)

TUB WALLS (to the ceiling and across slope): FL90 4x12 horizontal brick pattern | #640 arctic white prism grout | 12x12 niche with bottom @ 24" from top of tub



13. Hardwoods - **ORDER PROCESSED**

NOTE: there will NOT be a floor hearth (hardwood to run all the way to the wall)

- **Standard 3-1/4" #2 white oak pre-sealed solid** with the following changes:
 - Added hardwoods to: Media Room and Secondary Bedrooms
 - Changed to Rigid Core for the FROG/FROG bath: Color Springfield Oak



14. Hardwood Finish - **ORDER PROCESSED**

- Loba Life with Loba Easy Satin finish



INCLUDED FEATURES & SELECTIONS ADDENDUM

3865 DELINGER DRIVE
 DELINGER'S POINT @ CAROLINA PARK
 THE MULBERRY



15. Interior Colors - **ORDER PROCESSED**

ROOM	WALL PAINT	TRIM PAINT	CEILING PAINT
	# of colors per contract: 2	# of colors per contract: 1	# of colors per contract: 1
	Duration Home Interior Flat Latex	Pro-Classic® Interior Semi-Gloss Latex	Duron® Painters Edge Interior Flat Latex
FIRST FLOOR			
FOYER	Sw7005 Pure White	Sw7005 Pure White	Sw7005 Pure White
POWDER	Sw7005 Pure White	Sw7005 Pure White	Sw7005 Pure White
**STUDY	Sw7005 Pure White	Sw7005 Pure White	Sw7005 Pure White
LAUNDRY	Sw7005 Pure White	Sw7005 Pure White	Sw7005 Pure White
FAMILY ROOM	Sw7005 Pure White	Sw7005 Pure White	Sw7005 Pure White
KITCHEN	Sw7005 Pure White	Sw7005 Pure White	Sw7005 Pure White
BREAKFAST	Sw7005 Pure White	Sw7005 Pure White	Sw7005 Pure White
**BUTLERS PANTRY	SW7674 Peppercorn (use satin trim paint)	SW7674 Peppercorn satin (match cabinets)	Sw7005 Pure White
PANTRY	Sw7005 Pure White	Sw7005 Pure White	Sw7005 Pure White
MASTER BEDROOM	Sw7005 Pure White	Sw7005 Pure White	Sw7005 Pure White
MASTER BATHROOM	Sw7005 Pure White	Sw7005 Pure White	Sw7005 Pure White
MASTER CLOSETS/WC	Sw7005 Pure White	Sw7005 Pure White	Sw7005 Pure White
SECOND FLOOR			
STAIRWELL/SITTING	Sw7005 Pure White	Sw7005 Pure White	Sw7005 Pure White
BEDROOM 2/CLOSET	Sw7005 Pure White	Sw7005 Pure White	Sw7005 Pure White
BEDROOM 3/CLOSET	Sw7005 Pure White	Sw7005 Pure White	Sw7005 Pure White
BEDROOM 4/CLOSET	Sw7005 Pure White	Sw7005 Pure White	Sw7005 Pure White
MEDIA/CLOSET	F&B Skimming Stone #241	Sw7005 Pure White	Sw7005 Pure White
BATH 2	Sw7005 Pure White	Sw7005 Pure White	Sw7005 Pure White
BATH 3	Sw7005 Pure White	Sw7005 Pure White	Sw7005 Pure White
FROG			
LIVING AREA	F&B Skimming Stone #241	Sw7005 Pure White	Sw7005 Pure White
BATH	Sw7005 Pure White	Sw7005 Pure White	Sw7005 Pure White

NOTES:

** Doors to Study (French and single) & Pantry = Peppercorn SW7674 \$750

INCLUDED FEATURES & SELECTIONS ADDENDUM

3865 DELINGER DRIVE
DELINGER'S POINT @ CAROLINA PARK
THE MULBERRY



16. Interior Trim - **ORDER PROCESSED**

CROWN

5-1/4" Cove Crown with standard wall plate below



BASEBOARDS

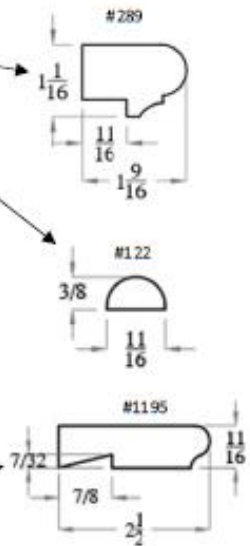
7-1/4" speed base with quarter round at hardwood



*Note: added to the Media, Secondary Bedrooms & Bathrooms upstairs

WINDOW & DOOR TRIM

OPTION #1 #122 ROUNDED BEAD,
#289 HEADER CAP & #1195 SILL



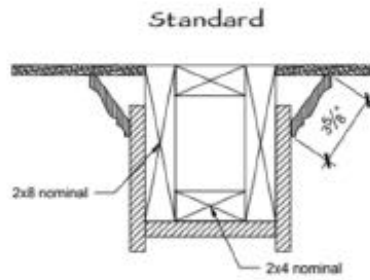
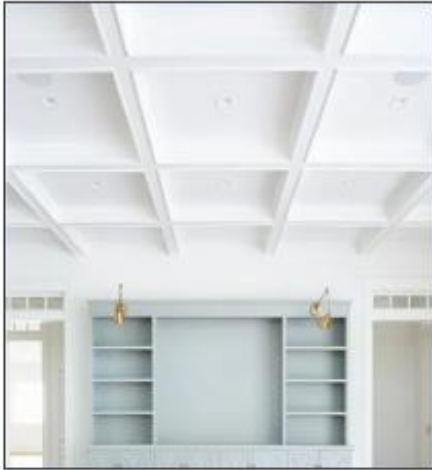
INCLUDED FEATURES & SELECTIONS ADDENDUM

3865 DELINGER DRIVE
DELINGER'S POINT @ CAROLINA PARK
THE MULBERRY



FAMILY ROOM COFFER

MDF wrapped coffers with 94° stepped bottom



BREAKFAST ROOM

8" MDF ship lap on the ceiling, run front to back



INCLUDED FEATURES & SELECTIONS ADDENDUM

3865 DELINGER DRIVE
 DELINGER'S POINT @ CAROLINA PARK
 THE MULBERRY



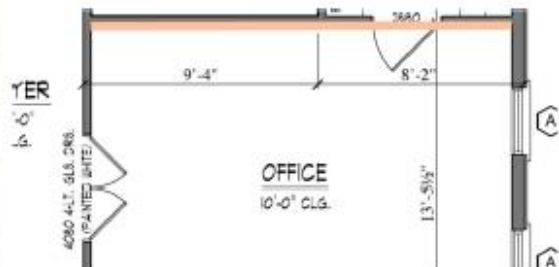
MASTER BATHROOM

Built-in linen cabinet similar to this but with Shaker recessed panels and 4939MUL (from ITC) around the inside edge and 3175 CA between the top and bottom sections; add matching recessed panels on wall behind tub above and below the window



STUDY

Recessed Shaker panel accent wall with 4939MUL panel trim; five squares across and four squares high; location highlighted below



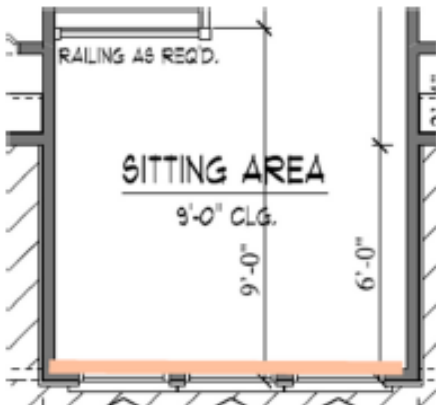
INCLUDED FEATURES & SELECTIONS ADDENDUM

3865 DELINGER DRIVE
DELINGER'S POINT @ CAROLINA PARK
THE MULBERRY



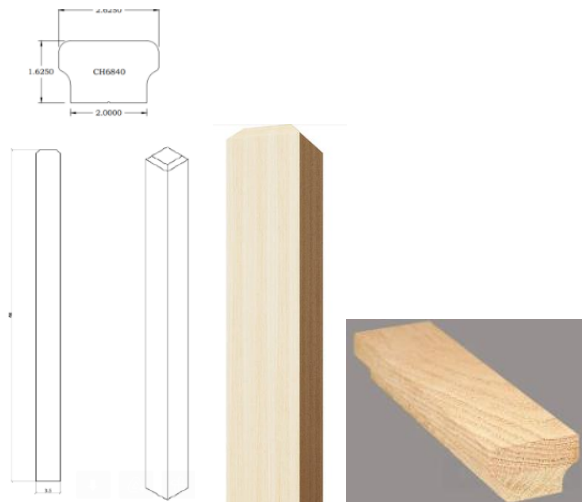
SITTING AREA

Run window legs down to baseboard and up to crown to create Shaker panels above and below the windows; use 1x8 baseboard and wall plate this wall only and add 4939MUL trim to the recessed panels; location highlighted below.



• Stair Parts

- Change Interior Newels to **paint** grade 4002/4003
- Change Interior Handrail to 6840P (1-1/4" PLOW) in White Oak **stained**
- 1-1/4" painted square balusters (**2 per tread**)



17. Shelving - **ORDER PROCESSED** | *Layouts available upon request*

18. Carpet - NA

INCLUDED FEATURES & SELECTIONS ADDENDUM

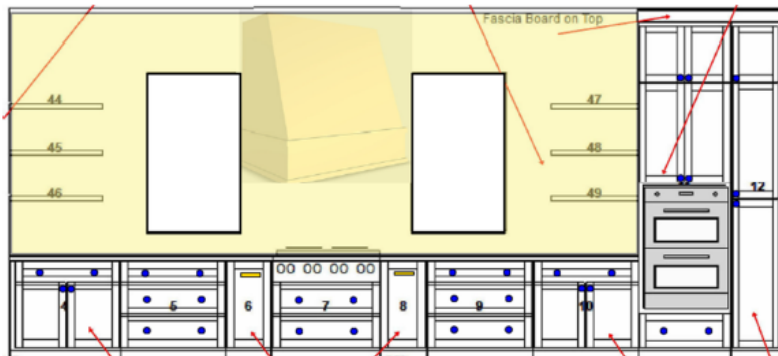
3865 DELINGER DRIVE
DELINGER'S POINT @ CAROLINA PARK
THE MULBERRY



19. Backsplash - **ORDER PROCESSED**

KITCHEN

Glacier White 3x6 honed marble brick pattern with Arctic White Prism grout up to the ceiling on the wall highlighted below.



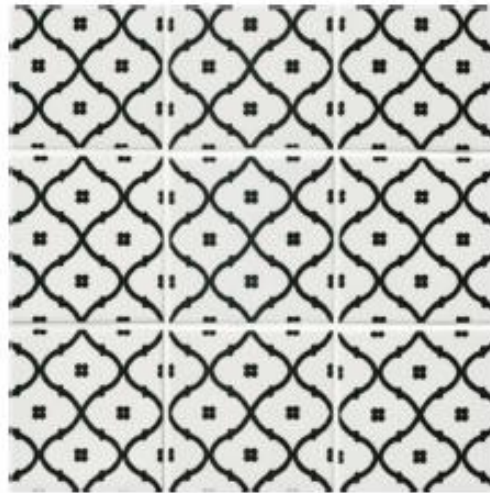
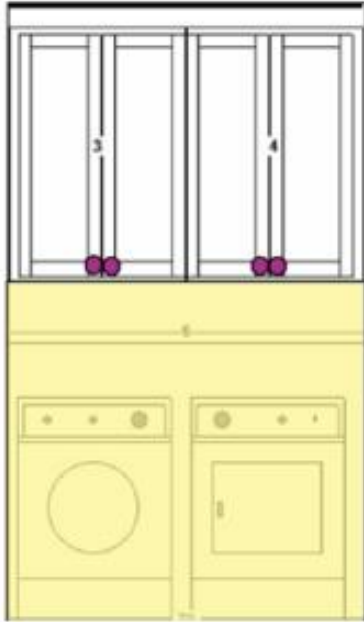
INCLUDED FEATURES & SELECTIONS ADDENDUM

3865 DELINGER DRIVE
DELINGER'S POINT @ CAROLINA PARK
THE MULBERRY



LAUNDRY

Pix Campagna 4x4 straight lay up to the bottom of the cabinet behind the washer and dryer; grout TBD



ORDER PROCESSED = This selection has been finalized and processed. No changes can be made.

* = Standard | If customer selects outside of inc. specifications (if applicable), customer is responsible for all related costs.

PLEASE NOTE: All photos used are for conceptual purposes; actual colors, products and installation may vary.

INCLUDED FEATURES & SELECTIONS ADDENDUM

3865 DELINGER DRIVE
DELINGER'S POINT @ CAROLINA PARK
THE MULBERRY



Quartz Countertops Disclosure

This document is meant to inform the customer of what to expect from a man-made quartz product purchased from Cline Homes.

- Quartz materials do not require a sealer at the time of installation. Quartz is a man-made product and is not porous. A finish is applied by the Manufacturer at the factory before the product is shipped to our Countertop Supplier.
- Quartz is a consumer good so the product warranty from the Manufacturer is passed to the customer at close. The warranty for your particular Manufacturer is available upon request. These warranties generally protect the consumer against manufacturer defects. In our experience, these manufacturer defects are really quite rare. These warranties normally do not protect against staining, etching, chipping, or scratching after closing.
- Our Cline Homes builder warranty ensures that the tops are installed properly and protects against any countertop issues that may occur as a result of poor install during the 1st year.
- Any damage to the countertops after closing that is not related to install will fall under the Manufacturer's warranty and will be subject to the response and policies of that Manufacturer.

Customer Acceptance

I understand and accept the above statements regarding our purchase of quartz countertops with Cline Homes.

Buyer(s) Name: _____

Address: 3865 Delinger Drive, Mt. Pleasant, SC 29466

Signature: _____ Date: _____

Signature: _____ Date: _____

INCLUDED FEATURES & SELECTIONS ADDENDUM

3865 DELINGER DRIVE
DELINGER'S POINT @ CAROLINA PARK
THE MULBERRY



NATURAL STONE COUNTERTOP WAIVER

Cline Homes' objective is to meet every customer's expectations regarding our countertops. Natural Products including **Granite, Marble, Quartzite and Limestone** limit our ability to achieve this because of the natural characteristics of the materials. This document outlines the qualities of the above listed natural products that need to be brought to the customer's attention at selection to make sure the risks and expectations have been fully explained.

- Natural Products come to us from the importers with pits, bruises, fissures, extrusions, and scratches that are a lot of times unavoidable. This is especially true of Marble but applies to all other natural products listed above. Often, natural stone can have areas that are filled by the importers prior to be sent to our Countertop Supplier.
- Natural Products vary in color and veining from one end of a slab to the other which makes seaming in some instances difficult with respect to color matching.
- Marble, Quartzite, and Limestone are soft stones that are likely to etch, stain and scratch. This type of wear is normal and to be expected with these natural products. Granite also can etch, stain and scratch on occasion.
- After closing Cline Homes cannot be responsible for etching, scratching, and staining in natural products.

Customer Acceptance

I understand and accept the above statements regarding our purchase of natural product countertops with Cline Homes. We understand the inherent characteristics of these countertops in the current market and accept these as expectations for the finished Product.

Buyer(s) Name: _____

Address: 3865 Delinger Drive, Mt. Pleasant, SC 29466

Signature: _____ Date: _____

Signature: _____ Date: _____